



**PRESIDENTIAL SUITE
TWO AVAILABLE
FLOORS 20 AND 21**

- 1,784 square feet
- 1,000-square-foot parlor
- Conference/dining table (seats 8)
- Reception capacity of 50 people on a flow basis
- Comfortable lounge/seating area
- Built-in wet bar and refrigerator
- Private service entrance
- Separate bath/closet facilities for the main parlor
- Includes one bedroom with a king bed and a sofa bed (two connecting bedrooms available for an additional charge)
- Soaking tub in master bathroom
- Chair and desk
- Safe



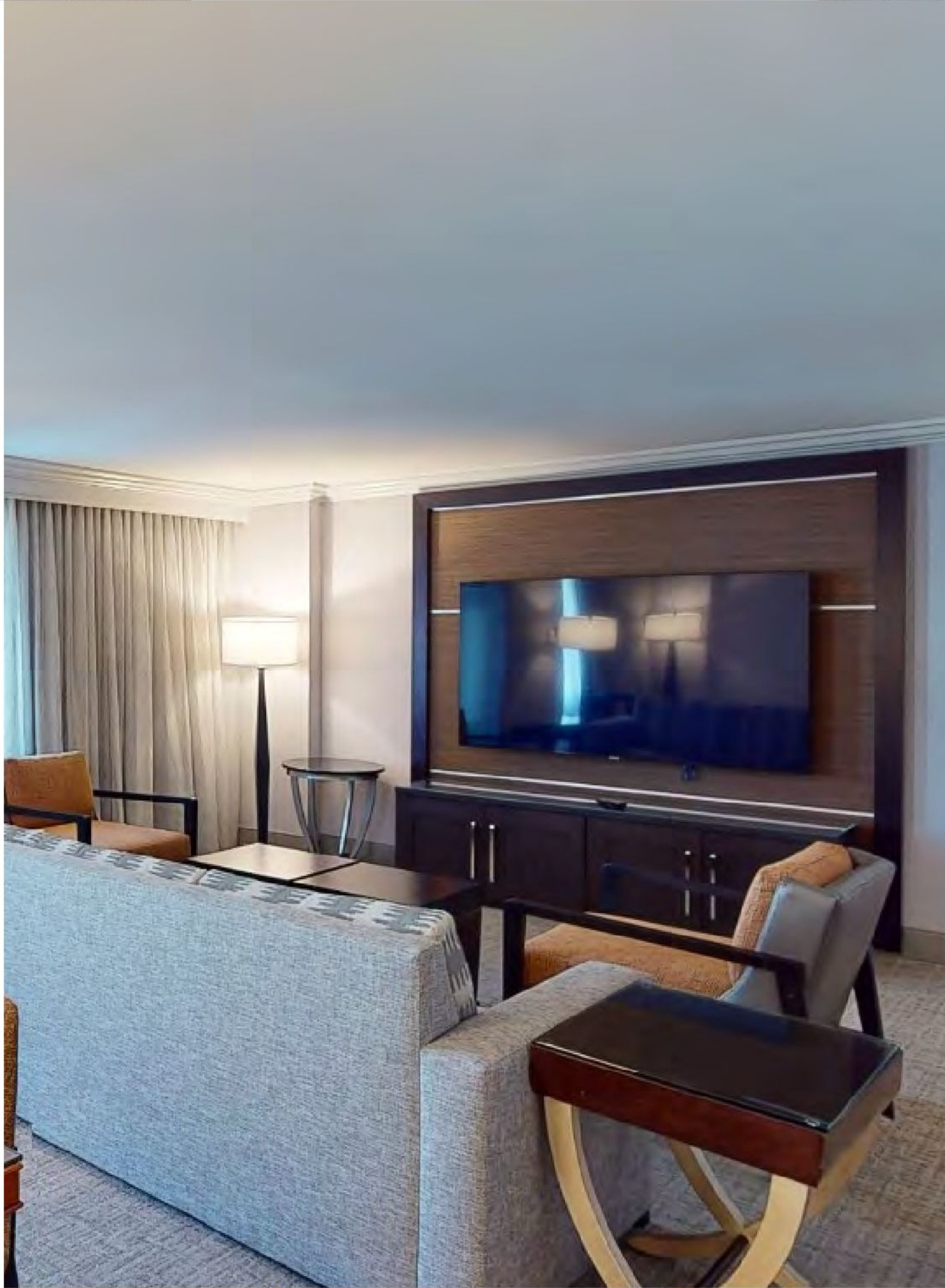
**VICE PRESIDENTIAL SUITE
TWO AVAILABLE
FLOORS 20 AND 21**

- 1,419 square feet
- 750-square-foot parlor
- Conference/dining table (seats 8)
- Reception capacity of 30 people on a flow basis
- Comfortable lounge/seating area
- Built-in wet bar and refrigerator
- Private service entrance
- Separate bath/closet facilities for the main parlor
- Includes one bedroom with a king bed and a sofa bed (two connecting bedrooms available for an additional charge)
- Chair and desk
- Safe



**GOVERNOR'S SUITE
TWO AVAILABLE
FLOORS 6 AND 7**

- 864 square feet
- Conference/dining table (seats 6)
- Reception capacity of 25 people
- Comfortable lounge/seating area
- Built-in wet bar and refrigerator
- Includes one bedroom with a king bed and a sofa bed (two connecting bedrooms available for an additional charge)
- Chair and desk
- Mini-refrigerator
- Safe



**MARQUIS SUITE
15 AVAILABLE
FLOORS 14 TO 19, 23**

- 704 square feet
- 350 square-foot parlor
- Conference/dining table (seats 4)
- Comfortable lounge/seating area
- Includes one bedroom with a king bed and a sofa bed (two connecting bedrooms available for an additional charge)
- Chair and desk
- Mini-refrigerator
- Safe

